

JC Valvulas India Pvt Ltd

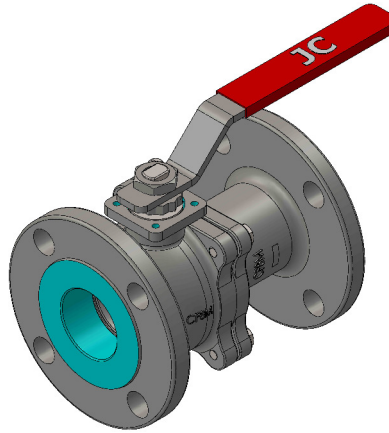
155 Series Full Bore Valves:
Sizes: 1/2" (DN15) to 8" (DN200)

Standards of Compliance & Design Advantages:

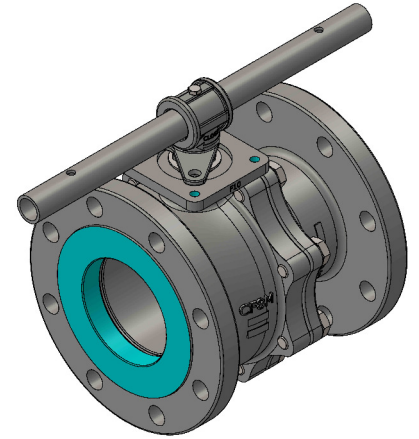
- DESIGN : ANSI B16.34
- FACE TO FACE : ANSI B16.10
- FLANGE DIMENSIONS : ANSI B16.5
- FIRE SAFE : API 607
- ANTISTATIC FEATURE AS PER BS5351
- PRESSURE TESTING : EN 12266 PART 1
- ISO 5211 MOUNTING PAD FOR AUTOMATION
- LIVE LOADED PACKING SYSTEM
- BLOW OUT PROOF STEM

Applications:

- CHEMICAL, PETROCHEMICAL, OIL & GAS, REFINING,
- PULP & PAPER, FOOD INDUSTRY & OTHERS.



1/2"(DN15) to 2"(DN50)



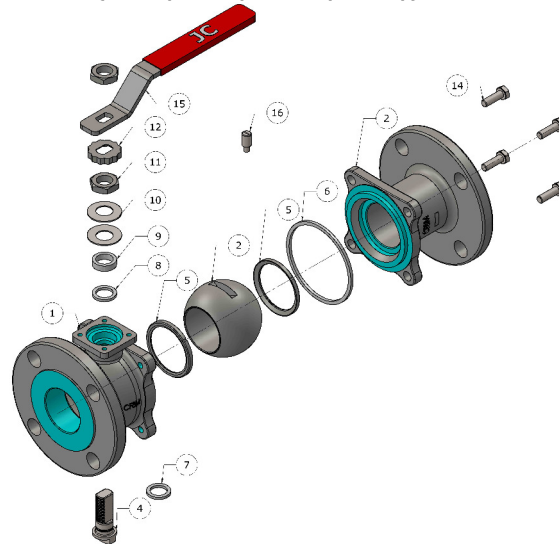
2 1/2"(DN65) to 8"(DN200)

Bill of Material:

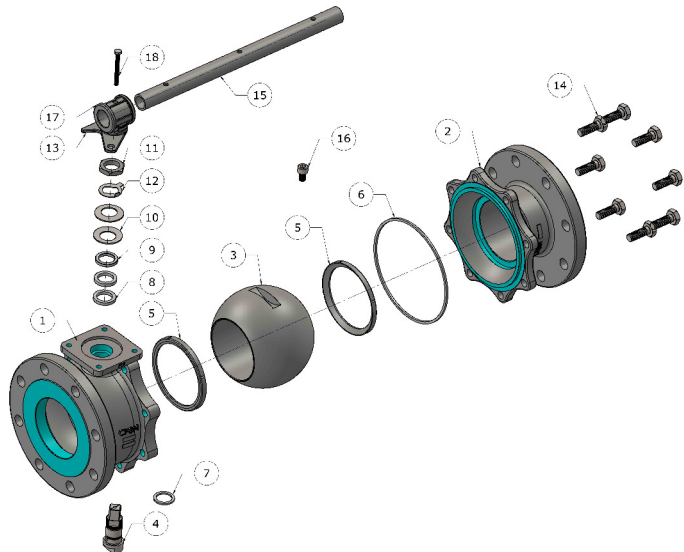
Item	Description	Material Specifications	Qty
1	Body	CF8M/CF8/CF3M/CF3/WCB	1
2	End	CF8M/CF8/CF3M/CF3/WCB	1
3	Ball	SS 316 / SS 304 etc.,	1
4	Stem	SS 316 / SS 304 etc.,	1
*5	Seat	PTFE/Filled PTFE/TFM etc.,	2
*6	Body Seal	PTFE - Non Fire Safe	2
		Graphite - Fire Safe	1
*7	Thrust Seal	PTFE - Non Fire Safe	1
		Graphite - Fire Safe	
*8	Gland Packing	PTFE - Non Fire Safe	2
		Graphite - Fire Safe	1
9	Gland	SS316/SS304	1
10	Disc Spring	17-7 PH/Spring Steel	2
11	Gland Nut	SS304/Gr. 8.8	2
12	Locking Clip	SS410	1
13	Locking Device	SS304	1
14	Fasteners	A2-70/Gr.8.8	4
15	(Wrench) Handle	CS/SS	1
16	Stop Pin	CS/SS	1
17	T-Wrench	CS/SS	1
18	T-Wrench Screw	SS304	1

Standard items for repair kits **

Exploded View: {1/2" (DN15) to 2" (DN50)}

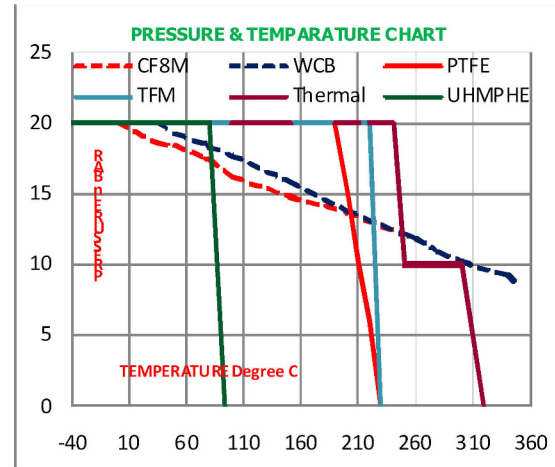


Exploded View: {2 1/2" DN65 to 8" (DN200)}

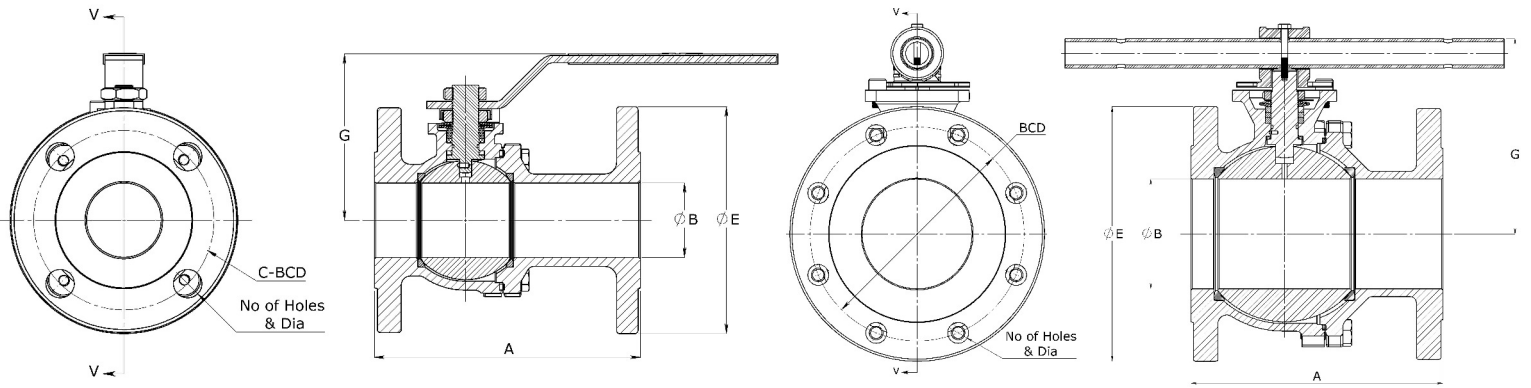


Flow Co-Efficient & Stem Limit Torque:

Size		Flow Co-efficient		Limiting Stem Torque- NM	
Inch	DN	Cv	Kv	SS 316	17/4 PH
1/2"	DN 15	30	26	14	110
3/4"	DN 20	50	43	14	110
1"	DN 25	100	86	25	210
1 1/2"	DN 40	250	216	50	425
2"	DN 50	480	414	50	425
2 1/2"	DN 65	750	653	380	3300
3"	DN 80	1300	1120	380	3300
4"	DN 100	2400	2070	380	3300
5"	DN 125	3800	3306	380	3300
6"	DN 150	5400	4660	1500	14100
8"	DN 200	9300	8000	1500	14100



Dimension Table & Detailed Views:



1/2" (DN15) to 2" (DN50)

2 1/2" (DN65) to 8" (DN200)

Size		Face to Face	Bore Dia	Bolt Circle Dia	No. of Holes & hole dia	Flange O.D	Handle HT From c/l	Approx weight	Break Torque
Inch	DN	A	B	C	D	E	G	kg	NM
1/2"	DN15	108	14	60.3	4 x ϕ 16	90	90	1.5	5
3/4"	DN20	117	20	69.9	4 x ϕ 16	100	97	2	7
1"	DN25	127	25	79.4	4 x ϕ 16	110	110	3	12
1 1/2"	DN40	165	35	98.4	4 x ϕ 16	125	130	5	18
2"	DN50	178	50	120.7	4 X ϕ 19	150	135	8	22
2 1/2"	DN65	190	64	139.7	4 X ϕ 19	180	150	15	45
3"	DN80	203	76	152.4	4 X ϕ 19	190	180	20	80
4"	DN100	229	100	190.5	8 X ϕ 19	230	200	30	120
5"	DN125	267	125	215.9	8 x ϕ 22.2	255	230	50	150
6"	DN150	394	150	241.3	8 x ϕ 22.2	280	280	75	220
8"	DN200	457	200	298.5	8 x ϕ 22.2	345	330	150	450