

| BALL VALVES |

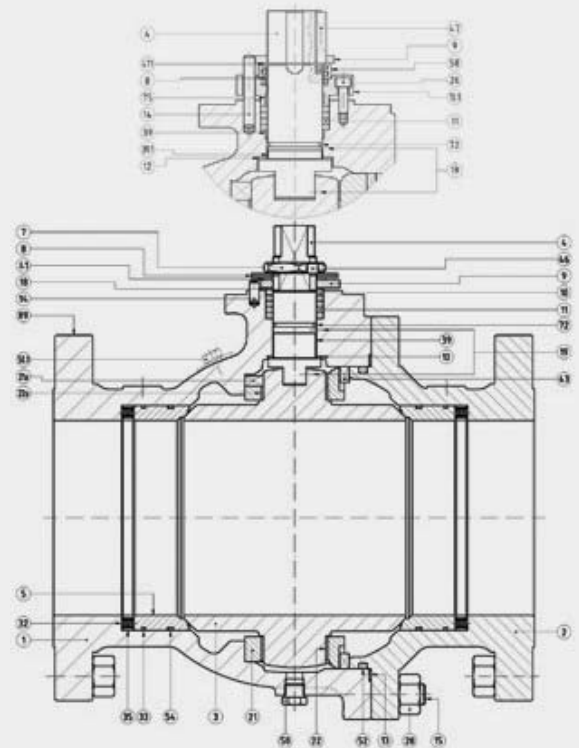
METAL SEATED CAST TRUNNION

2" - 24" | Class 150 - Class 600

Materials METAL TO METAL TRUNNION

Item	Description	AIM	IIM
1	Body	A 216 Gr. WCB (C ≤ 0.25%)	A 351 Gr. CF8M
2	Body connector	A 216 Gr. WCB (C ≤ 0.25%)	A 351 Gr. CF8M
3	Ball	Tp.316 + HT70	
4	Stem	NITRONIC-50	
5	Seat ring	Tp.316 + HT70	
7	Gland nut	Zinc Plated Carbon Steel	AISI-303
8	Disk spring / Spring	Carbon St. *	E.N.P. Carbon St. *
9	Stop plate	Carbon St.	AISI-304
10	Gland ring	AISI-303 + HT-65	AISI-316 + HT-65
10.1	Gland	AISI-303	AISI-316
11	Gland packing	Graphite	
12	Stem thrust seal	AISI-316 + HT-65	
13	Body connector seal	AISI-316L + Graphite	
14	Stop pin	Carbon St.	Stainless St.
15	Stud	A 193 Gr. B7M Zinc dichromate	A 193 Gr. B8M **
18	Thrust washer	50% S.S. PTFE	
19	Antistatic device	Stainless St.	
21 / 21a	Ball trunnion	A 351 Gr. CF8M	
22 / 22a	Trunnion bearing	AISI-316 + PTFE	
26	Bolt	DIN 912 8.8 Zinc Plated	DIN 912 A2
28	Nut	A 194 Gr. 2HM Zinc dichromate	A 194 Gr. 8M **
32	Spring	Inconel - 750	
33	O' Ring	FKM -- Note 1 --	
35	Spring carrier	A 351 Gr. CF8M	
39	Stem bushing	25% G.F. PTFE	
39.1	Stem bushing	AISI-316 + PTFE -- Note 2 & Note 3 --	
41	Spacer	Carbon St.	Stainless St.
43	Key	AISI-316	
46	Locking washer	AISI-304	
47	Key	Carbon St.	
50	Drain plug	A 105	AISI-316
50.1	Vent plug	A 105	AISI-316
52	O' Ring	FKM -- Note 1 & Note 2 --	
54	Seat carrier seal	Graphite	
58	Spring protection	Carbon St.	Stainless St.
72	O' Ring	FKM -- Note 1 --	
75	Stem bushing	AISI-316 + PTFE -- Note 2 & Note 3 --	
89	Identification plate	Stainless St.	
471	Retainer	Carbon St.	Stainless St.

ESQUEMA



(*) On request Inconel X-750.

(**) On request B7M / 2HM Zinc Plated & Bichromated.

Note 1: Depending on design conditions AFLAS, KALREZ or KALREZ Spectrum.

Note 2: Only DN-350 & 400 and all Fig.2560.

Note 3: Over 350°C Steel Inconel + HT-625

CAST TRUNNION METAL 2515 / 2530 / 2560

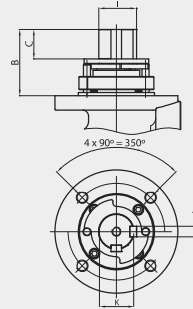
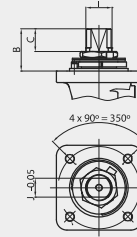
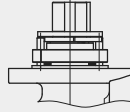
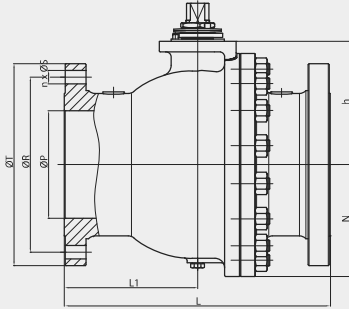
Class 150 / 300 / 600

Full Bore

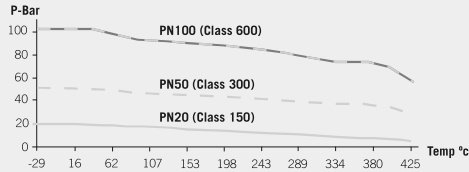
Class 150. From 2" to 16"

Class 300. From 2" to 16"

Class 600. From 2" to 12"



Pressure - Temperature



METAL SEATS

2" to 16" ———
 For A216 Gr. WCB only.
 For other materials consult ASME B16.34

(*) Dimensions of diameters of drills ISO 5211 refer to table from page 60.



Fig. 2515 (Class 150)

DN	ØP	L	L1	ØR	n x ØS	ØT	h	N	ISO 5211	B	C	I	J	K	WEIGHT	TORQUE
50 (2")	50	178	78.5	120.7	4x19	150	84	80	F07	42	17	M22x1.5	16	-	13	80
80 (3")	80	203	87	152.4	4x19	190	126	-	F10	55	27	M28x1.5	20	-	22	220
100 (4")	100	229	101	190.5	8x19	230	152	120	F12	56	27	M35x2	25	-	39	340
150 (6")	151	394	197	241.3	8x22.2	280	212	168	F14	70	36	M45x2	32	-	98	720
200 (8")	203	457	230	298.5	8x22.2	345	233	208	F14	70	37	M45x2	32	-	124	1300
250 (10")	254	533	267	362	12x25.4	405	256	243	F14	70	37	M45x2	32	-	175	1883
300 (12")	305	610	305	431.8	12x25.4	485	297	287.5	F14	106	58	50	14	53.5	295	2620
350 (14")	337	686	343	476.3	12x28.5	535	333	323	F16	103	49	60	18	64.2	580	2446
400 (16")	388	762	381	539.8	16x28.5	595	412	358	F25	159	103	90	25	95.3	750	3160

Fig. 2530 (Class 300)

DN	ØP	L	L1	ØR	n x ØS	ØT	h	N	ISO 5211	B	C	I	J	K	WEIGHT	TORQUE
50 (2")	50	216	84	127	8x19	165	84	-	F07	42	17	M22x1.5	16	-	16	190
80 (3")	80	283	115	168.3	8x22.2	210	126	-	F10	55	27	M28x1.5	20	-	33	360
100 (4")	100	305	133	200	8x22.2	255	152	-	F12	56	27	M35x2	25	-	43	640
150 (6")	151	403	202	269.9	12x22.2	320	212	173	F14	70	36	M45x2	32	-	113	1290
200 (8")	203	502	252	330.2	12x25.4	380	233	210	F14	70	37	M45x2	32	-	157	2162
250 (10")	254	568	284	387.4	16x28.5	445	257	253	F14	70	37	M45x2	32	-	263	4100
300 (12")	305	648	315	450.8	16x31.8	520	310	300	F16	103	49	60	18	64.2	480	5670
350 (14")	337	762	381	514.4	20x31.8	585	333	331	F16	103	49	60	18	64.2	655	6030
400 (16")	388	838	419	571.5	20x34.9	650	412	365	F25	159	103	90	25	95.3	890	7200

Fig. 2560 (Class 600)

DN	ØP	L	L1	ØR	n x ØS	ØT	h	N	ISO 5211	B	C	I	J	K	WEIGHT	TORQUE
50 (2")	50	292	96	127	8x19	165	84	-	F07	42	17	M22x1.5	16	-	20	270
80 (3")	80	356	140	168.3	8x22.2	210	126	113	F10	55	27	M28x1.5	20	-	41	560
100 (4")	100	432	160	215.9	8x25.2	275	152	-	F12	56	27	M35x2	25	-	77	1240
150 (6")	151	559	246	292.1	12x28.5	355	212	188	F14	97	49	45	14	48.5	192	2500
200 (8")	203	660	315	349.2	12x31.8	420	237	235	F14	113	64	50	14	53.5	329	6060
250 (10")	254	787	340	431.8	16x34.9	510	275	273	F16	103	49	60	18	64.2	460	8300
300 (12")	305	838	404	489	20x34.9	560	345	335	F16	127	73	65	18	69.2	570	9400

(*) Dimensions in mm and weight in kg.
 (***) Weights and dimensions can be changed without notice.

| BALL VALVES |

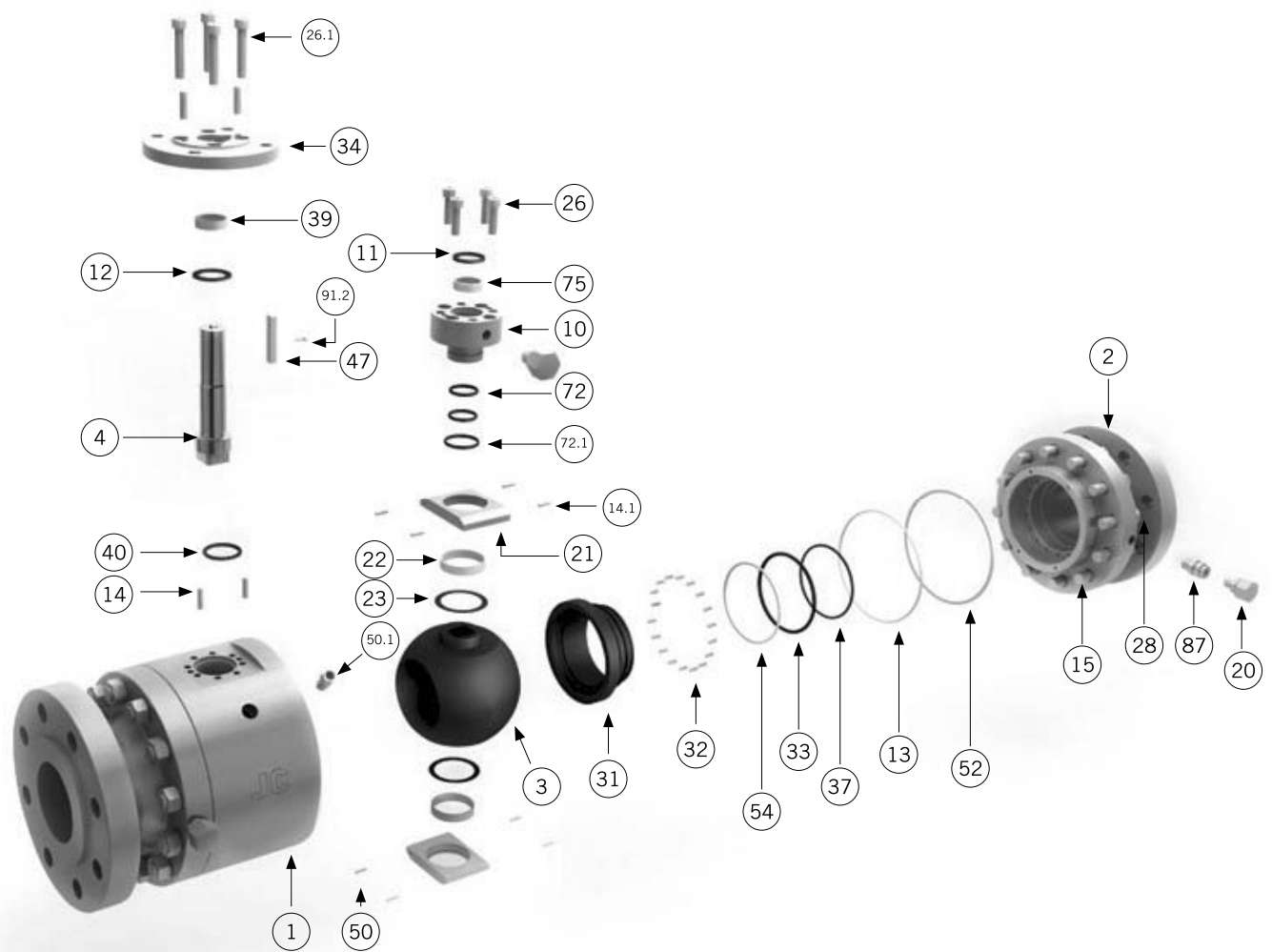
METAL SEATED 3-PIECE FORGED TRUNNION MOUNTED

2" - 24" | Class 150 - Class 1500

A trunnion ball valve has additional mechanical anchoring of the ball at the top and the bottom, suitable for larger and higher pressure valves.

The JC trunnion mounted ball valves are suitable to stand the harsh service conditions often presented in the hydrocarbon industry and in the gas storage and transportation field. In general, they are recommended for tight shut-off in high pressure and double block and bleed applications.





Materials

SERIES 6000(M) & 7000(M)

Item	Description	AIM	LIM	IIM
1	Body	A 105N	A 350 Gr. LF2 Class. 1	A182 F316
2	Body Connector	A 105N	A 350 Gr. LF2 Class. 1	A182 F316
3	Ball		A182 F316 or A351Gr. CF8M (Treatments HT-65, CT-70 or CC-60)	
4	Stem		A 479 Tp.316	
10	Gland	A 105N	A 350 Gr. LF2 Class-1	A 479 Tp.316
11	Gland Packing		Graphite	
12	Stem Thrust Seal		AISI 316 + HT-65	
13	Body Connector Seal		Graphite	
14 / 14.1	Pin	Carbon St.	Carbon Steel	Stainless Steel
15	Stud	A 193 Gr. B7M Zinc dichromate	A 320 Gr. L7M	A 193 Gr. B8M
19	Antistatic Device		Stainless St.	
20	Sealant Injector	Carbon Steel	Carbon Steel	Stainless Steel
21	Ball Trunnion		A 479 Tp.316	
22*	Trunnion Bearing		AISI 316 with inside in PTFE	
23*	Bearing		PTFE	
26 / 26.1	Bolt	A 193 Gr. B7M Zinc dichromate	A 320 Gr. L7M	A 193 Gr. B8M
28	Nut	A 194 Gr. 2HM Zinc dichromate	A 194 Gr. 7M	A 194 Gr. 8M
31	Seat		A 479 Tp.316 / A182 F316 (Treatments HT-65, CT-70 or CC-60)	
32	Spring		Inconel - 750	
33*	"O" Ring		AFLAS	
34	Mounting Flange	A 105N	A 350 Gr. LF2 Class-1	A 479 Tp.316
37*	"O" Ring		AFLAS	
39*	Stem Bushing		AISI 316 with inside in PTFE	
40	Gasket		Graphite	
47	Key	Carbon Steel	Carbon Steel	Stainless St.
50	Drain Plug	A 105	A 350 Gr. LF2 Class-1	AISI 316
50.1	Relieve Plug	A 105	A 350 Gr. LF2 Class-1	AISI 316
52*	"O" Ring		AFLAS	
54	Seat Carrier Seal		Graphite	
72* / 72.1	"O" Ring		AFLAS	
75*	Stem Bushing		AISI 316 with inside in PTFE	
87	Check Valve		Stainless St.	
89	Identification plate		Stainless St.	
91.2	Bolt		DIN 912 A2	

(*) In case of extreme high temperature it could be changed to another material.

METAL SEATED FORGED BALL VALVES 6015 / 6030 / 6060 / 6090 / 6050

Full Bore

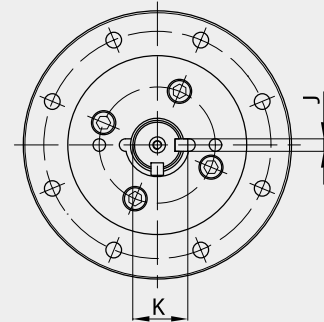
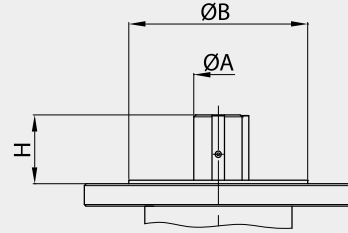
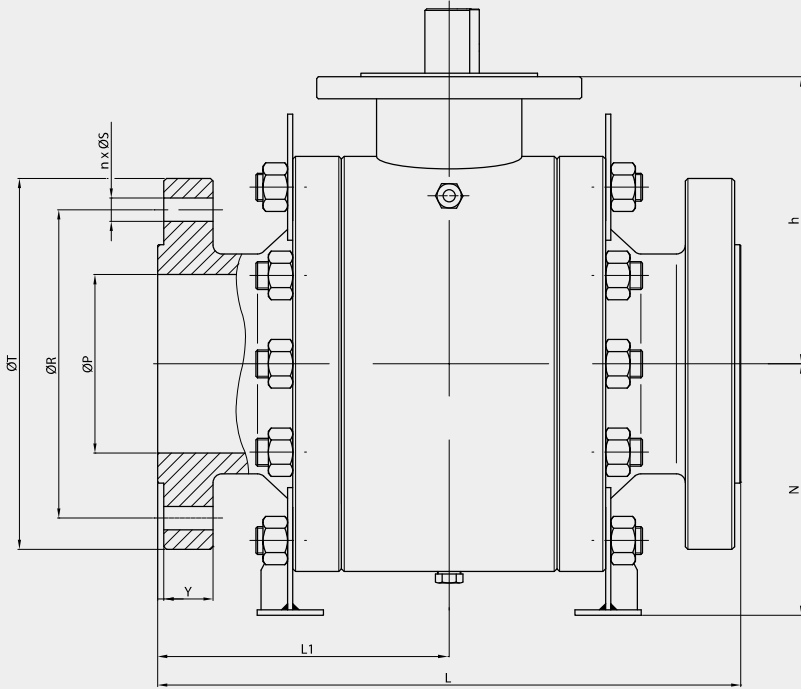
Class 150.
From 2" to 24" (1)

Class 300.
From 2" to 24" (1)

Class 600.
From 2" to 24" (1)

Class 900.
From 2" to 12" (1)

Class 1500.
From 2" to 8" (1)



(*) Dimensions of diameters of drills ISO 5211 refer to table from page 60.

Pressure - Temperature

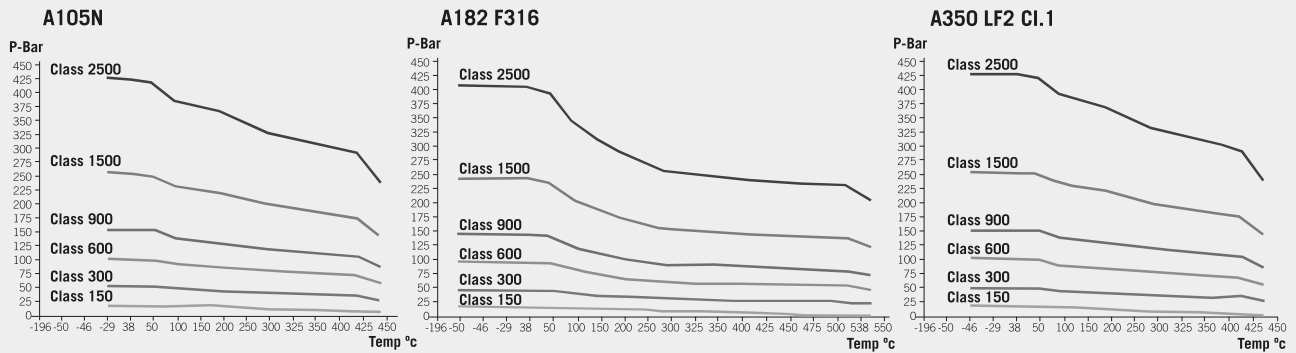


Fig. 6015 (Class 150)

DN	øP	L	L1	øR	n x øS	øT	Y	h	N	ISO 5211	H	øA	J	K	WEIGHT	TORQUE	Kv
2"	49	178	89	120.7	4 x 19	150	14	125	100	F10	36,5	20	8	22,5	52	41	366
3"	76	203	101,5	152.4	4 x 19	190	18	156,5	133,5	F12	37,5	26	10	30	59	97	938
4"	102	229	114,5	190.5	8 x 19	230	22	175	167	F12	54	30	10	34	110	170	1.465
6"	152	394	197	241.3	8 x 22	280	24	269	277	F16	71	39,9	14	48,9	171	457	3.297
8"	203	457	228,5	298.5	8 x 22.2	345	27	325	325	F25	77	49,9	14	58,4	334	845	5.861
10"	254	533	266,5	362	12 x 25.4	405	29	362	319	F25	84,5	59,9	16	67	458	1.396	9.454
12"	305	610	305	431.8	12 x 25.4	485	30	423	399	F25	104	69,9	18	78	736	2.836	13.631
14"	337	686	343	476.3	12 x 28.5	535	33	455	439	F30	119	79,9	22	87,9	1.019	3.411	16.641
16"	387	762	381	539.8	16 x 28.5	595	35	490	472	F30	134	84,9	22	94,9	1.778	4.501	23.554
18"	438	864	432	577.9	16 x 31.8	635	38	542	596	F30	147,5	99,9	28	111,9	1.860	6.543	29.672
20"	488	914	457	635	20 x 31.8	700	41	577	610	F30	147,5	99,9	28	111,9	2.439	8.238	36.633
24"	589	1.067	533,5	749.3	20 x 34.9	815	46	599	692	F40	152	120	32	134	4.302	20.908	52.751

(*) Dimensions in mm and weight in kg.
(**) Weights and dimensions can be changed without notice.
(1) Bigger sizes available under customers request.

Fig. 6030 (Class 300)

DN	øP	L	L1	øR	n x øS	øT	Y	h	N	ISO 5211	H	øA	J	K	WEIGHT	TORQUE	Kv
2"	49	216	108	127	8 x 19	165	21	125	95	F10	36,5	20	8	22,5	60	83	366
3"	76	283	141,5	168,3	8 x 22,2	210	27	156,5	133,5	F12	37,5	26	10	30	72	208	938
4"	102	305	152,5	200	8 x 22,2	255	30	175	167	F12	54	30	10	34	120	380	1.465
6"	152	403	201,5	269,9	12 x 22,2	320	35	269	277	F16	71	39,9	14	48,9	195	1.089	3.297
8"	203	502	251	330,2	12 x 25,4	380	40	325	325	F25	77	49,9	14	58,4	352	2.060	5.861
10"	254	568	284	387,4	16 x 28,5	445	46	362	319	F25	84,5	59,9	16	67	534	3.497	9.454
12"	305	648	324	450,8	16 x 31,8	520	49	423	399	F25	104	69,9	18	78	847	7.256	13.631
14"	337	762	381	514,4	20 x 31,8	585	52	455	439	F30	119	79,9	22	87,9	1.221	8.579	16.641
16"	387	838	419	571,5	20 x 34,9	650	56	490	472	F30	134	84,9	22	94,9	1.831	11.344	23.554
18"	438	914	457	628,6	24 x 34,9	710	59	542	596	F30	147,5	99,9	28	111,9	2.057	16.348	29.672
20"	488	991	495,5	685,8	24 x 34,9	775	62	577	610	F30	147,5	99,9	28	111,9	2.721	20.945	36.633
24"	589	1.143	571,5	812,8	24 x 41,3	915	68	599	673	F40	152	120	32	134	5.525	44.489	52.751

Fig. 6060 (Class 600)

DN	øP	L	L1	øR	n x øS	øT	Y	h	N	ISO 5211	H	øA	J	K	WEIGHT	TORQUE	Kv
2"	49	292	146	127	8 x 19	165	25	125	100	F10	36,5	20	8	22,5	63	153	366
3"	76	356	178	168,3	8 x 22,2	210	32	156,5	138,5	F12	37,5	26	10	30	78	355	938
4"	102	432	216	213,9	8 x 25,4	275	38	175	164	F12	54	30	10	34	132	716	1.465
6"	152	559	279,5	292,1	12x 28,5	355	48	268,5	277,5	F16	71	44,9	14	51,4	262	2.211	3.297
8"	203	660	330	349,2	12 x 31,8	420	56	325	296	F25	77	54,9	14	61,4	490	4.131	5.861
10"	254	787	393,5	431,8	16 x 34,9	510	64	362	365	F25	84,5	59,9	16	67	728	6.891	9.454
12"	305	838	419	489	20 x 34,9	560	67	423	418	F25	104	69,9	18	78	1.218	13.065	13.631
14"	337	889	444,5	527	20 x 38,1	605	70	455	450	F30	119	79,9	22	87,9	1.374	15.373	16.641
16"	387	991	495,5	603,2	20 x 41,3	685	76	490	504	F30	134	84,9	22	94,9	2.474	20.339	23.554
18"	438	1.092	546	654	20 x 44,5	745	83	542	567,5	F30	147,5	99,9	28	111,9	2.595	29.257	29.672
20"	488	1.194	597	723,9	24 x 44,5	815	89	577	581	F35	147,5	99,9	28	111,9	3.183	37.645	36.633
24"	589	1.397	698,5	838,2	24 x 50,8	940	102	599	694	F40	157,5	119,8	32	133,6	6.250	76.800	52.751

Fig. 6090 (Class 900)

DN	øP	L	L1	øR	n x øS	øT	Y	h	N	ISO 5211	H	øA	J	K	WEIGHT	TORQUE	Kv
2"	51	368	184	165,1	8 x 25,4	215	38,1	120	101	F10	35	23	8	27	52	518	366
3"	77	381	190,5	190,5	8 x 25,4	240	38,1	153	124	F14	37	33	10	38	80	1.193	938
4"	102	457	228,5	235	8 x 31,8	290	44,5	170	151	F16	37	33	10	38	170	1.843	1.465
6"	152	610	305	317,5	12 x 31,8	380	55,6	214	380	F25	59	46	14	53	390	3.339	3.297
8"	203	737	368,5	393,7	12 x 38,1	470	63,5	258	428	F25	75	58	18	67	640	8.596	5.861
10"	254	838	419	469,9	16 x 38,1	545	69,9	303	489	F25	113	68	20	78	1.070	12.271	9.454
12"	305	965	482,5	533,4	20 x 38,1	610	79,4	348	525	F25	111	68	20	78	1.610	19.382	13.631

Fig. 6050 (Class 1500)

DN	øP	L ⁽²⁾	L1	øR	n x øS	øT	Y	h	N	ISO 5211	H	øA	J	K	WEIGHT	TORQUE	Kv
2"	51	371	185,5	165,1	8 x 25,4	215	38,1	129	107	F12	31	23	8	27	55	866	366
3"	77	473	236,5	203,2	8 x 31,8	265	47,7	156	137	F14	36	33	10	38	105	2.253	938
4"	102	549	274,5	241,3	8 x 34,9	310	54	193	168	F16	39,5	38	10	43	205	3.105	1.465
6"	146	711	355,5	317,5	12 x 38,1	395	82,6	242	395	F25	69,5	46	14	53	525	5.428	3.297
8"	194	841	420,5	393,7	12 x 44,5	485	92,1	292	445	F25	112,5	68	20	78	890	15.333	5.861

(*) Dimensions in mm and weight in kg.
 (**) Weights and dimensions can be changed without notice.
 (1) Bigger sizes available under customers request.

METAL SEATED FORGED BALL VALVES 7015 / 7030 / 7060 / 7090 / 7050

Reduced Bore

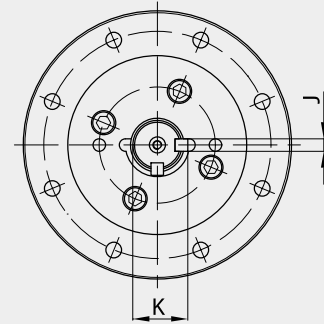
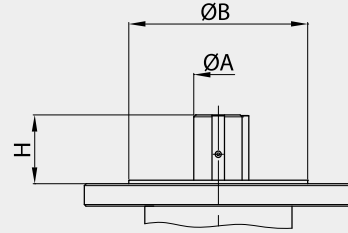
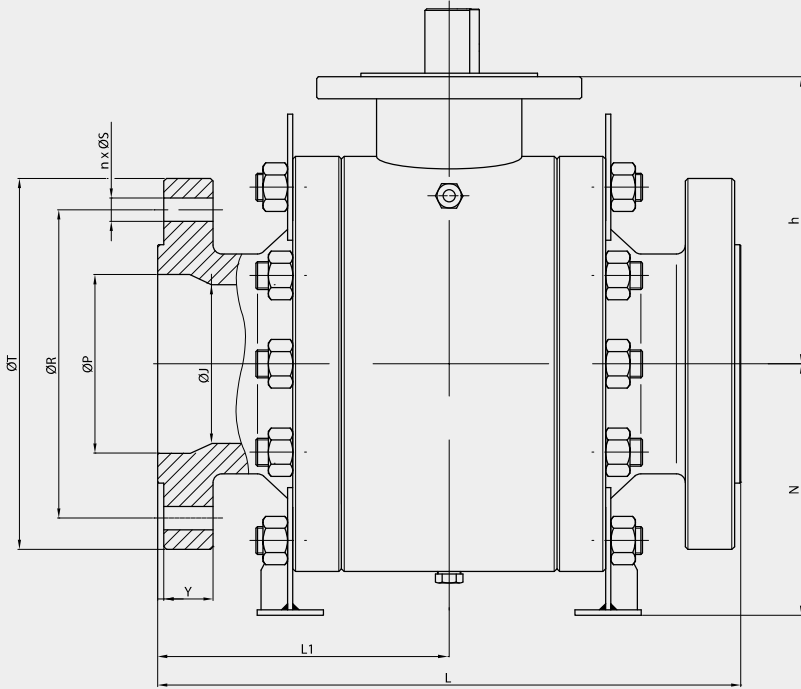
Class 150.
From 2" to 24" (1)

Class 300.
From 2" to 24" (1)

Class 600.
From 2" to 24" (1)

Class 900.
From 2" to 12" (1)

Class 1500.
From 2" to 8" (1)



(*) Dimensions of diameters of drills ISO 5211 refer to table from page 60.

Pressure - Temperature

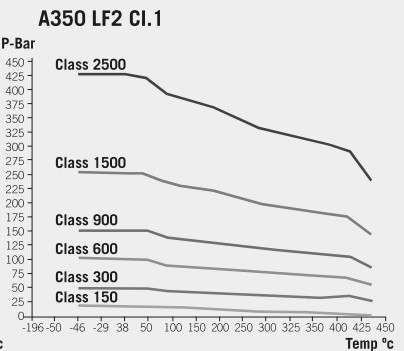
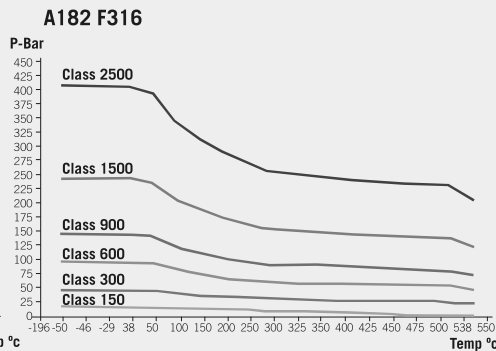
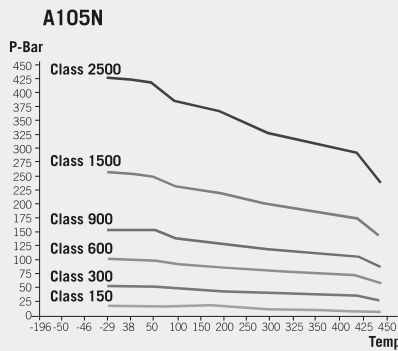


Fig. 7015 (Class 150)

DN	øP	øS	L	L1	øR	n x øS	øT	Y	h	N	ISO 5211	H	øA	J	K	WEIGHT	TORQUE	Kv
3" x 2"	76	49	203	101,5	152.4	4 x 19	190	18	125	100	F10	36,5	20	8	22,5	66	41	190
4" x 3"	102	76	229	114,5	190.5	8 x 19	230	22	156,5	133,5	F12	37,5	26	10	30	75	97	567
6" x 4"	152	102	394	197	241.3	8 x 22	280	24	175	167	F12	54	30	10	34	115	170	815
8" x 6"	203	152	457	228,5	298.5	8 x 22.2	345	27	269	277	F16	71	39,9	14	48,9	205	457	2.021
10" x 8"	254	203	533	266,5	362	12 x 25.4	405	29	325	325	F25	77	49,9	14	58,4	375	845	4.205
12" x 10"	305	254	610	305	431.8	12 x 25.4	485	30	362	319	F25	84,5	59,9	16	67	565	1.396	7.348
14" x 12"	337	305	686	343	476.3	12 x 28.5	535	33	423	399	F25	104	69,9	18	78	825	2.836	10.120
16" x 14"	387	337	762	381	538.8	16 x 28.5	595	35	455	439	F30	119	79,9	22	87,9	1.250	3.411	12.000
18" x 16"	438	387	864	432	577.9	16 x 31.8	635	38	490	472	F30	134	84,9	22	94,9	1.820	4.501	17.269
20" x 18"	488	438	914	457	635	20 x 31.8	700	41	542	596	F30	147,5	99,9	28	111,9	2.450	6.543	18.647
24" x 20"	589	488	1.067	533,5	749.3	20 x 34.9	815	46	577	610	F30	147,5	99,9	28	111,9	2.790	8.238	27.010
30" x 24"	735	589	1.295	647,5	857	28 x 35	985	73	599	692	F40	152	120	32	134	5.530	20.908	32.150

(*) Dimensions in mm and weight in kg.
(**) Weights and dimensions can be changed without notice.
(1) Bigger sizes available under customers request.

Fig. 7030 (Class 300)

DN	øP	øS	L	L1	øR	n x øS	øT	Y	h	N	ISO 5211	H	øA	J	K	WEIGHT	TORQUE	Kv
3" x 2"	76	49	283	141,5	168.3	8 x 22.2	210	27	125	95	F10	36,5	20	8	22,5	65	83	190
4" x 3"	102	76	305	152,5	200	8 x 22.2	255	30	156,5	133,5	F12	37,5	26	10	30	85	208	567
6" x 4"	152	102	403	201,5	269.9	12 x 22.2	320	35	175	167	F12	54	30	10	34	135	380	815
8" x 6"	203	152	502	251	330.2	12 x 25.4	380	40	269	277	F16	71	39,9	14	48,9	225	1.089	2.021
10" x 8"	254	203	568	284	387.4	16 x 28.5	445	46	325	325	F25	77	49,9	14	58,4	385	2.060	4.205
12" x 10"	305	254	648	324	450.8	16 x 31.8	520	49	362	319	F25	84,5	59,9	16	67	650	3.497	7.348
14" x 12"	337	305	762	381	514.4	20 x 31.8	585	52	423	399	F25	104	69,9	18	78	995	7.256	10.120
16" x 14"	387	337	838	419	571.5	20 x 34.9	650	56	455	439	F30	119	79,9	22	87,9	1.460	8.579	12.000
18" x 16"	438	387	914	457	628.6	24 x 34.9	710	59	490	472	F30	134	84,9	22	94,9	1.925	11.344	17.269
20" x 18"	488	438	991	495,5	685.8	24 x 34.9	775	62	542	596	F30	147,5	99,9	28	111,9	2.450	16.348	18.647
24" x 20"	589	488	1.143	571,5	812.8	24 x 41.3	915	68	577	610	F30	147,5	99,9	28	111,9	3.250	20.945	27.010
30" x 24"	735	589	1.397	698,5	857	28 x 48	1.092	90	599	673	F40	152	120	32	134	5.900	44.489	32.150

Fig. 7060 (Class 600)

DN	øP	øS	L	L1	øR	n x øS	øT	Y	h	N	ISO 5211	H	øA	J	K	WEIGHT	TORQUE	Kv
3" x 2"	76	49	356	178	168.3	8 x 22.2	210	32	125	100	F10	36,5	20	8	22,5	72	153	190
4" x 3"	102	76	432	216	215.9	8 x 25.4	275	38	156,5	138,5	F12	37,5	26	10	30	93	355	567
6" x 4"	152	102	559	279,5	292.1	12x 28.5	355	48	175	164	F12	54	30	10	34	169	716	815
8" x 6"	203	152	660	330	349.2	12 x 31.8	420	56	268,5	277,5	F16	71	44,9	14	51,4	301	2.211	2.021
10" x 8"	254	203	787	393,5	431.8	16 x 34.9	510	64	325	296	F25	77	54,9	14	61,4	555	4.131	4.205
12" x 10"	305	254	838	419	489	20 x 34.9	560	67	362	365	F25	84,5	59,9	16	67	829	6.891	7.348
14" x 12"	337	305	889	444,5	527	20 x 38.1	605	70	423	418	F25	104	69,9	18	78	1.426	13.065	10.120
16" x 14"	387	337	991	495,5	603.2	20 x 41.3	685	76	455	450	F30	119	79,9	22	87,9	1.751	15.373	12.000
18" x 16"	438	387	1.092	546	654	20 x 44.5	745	83	490	504	F30	134	84,9	22	94,9	2.625	20.339	17.269
20" x 18"	488	438	1.194	597	723.9	24 x 44.5	815	89	542	567,5	F30	147,5	99,9	28	111,9	3.111	29.257	18.647
24" x 20"	589	488	1.397	698,5	838.2	24 x 50.8	940	102	577	581	F35	147,5	99,9	28	111,9	4.250	37.645	27.010
30" x 24"	735	589	1.651	825,5	857	28 x 54	1.130	108	599	694	F40	157,5	119,8	32	133,6	7.125	76.800	32.150

Fig. 7090 (Class 900)

DN	øP	øS	L	L1	øR	n x øS	øT	Y	h	N	ISO 5211	H	øA	J	K	WEIGHT	TORQUE	Kv
3" x 2"	77	51	381	190,5	190,5	8 x 25.4	240	38,1	120	101	F10	35	23	8	27	62	518	190
4" x 3"	102	77	457	228,5	235	8 x 31.8	290	44,5	153	124	F14	37	33	10	38	105	1.193	567
6" x 4"	152	102	610	305	317,5	12 x 31.8	380	55,6	170	151	F16	37	33	10	38	201	1.843	815
8" x 6"	203	152	737	368,5	393,7	12 x 38.1	470	63,5	214	380	F25	59	46	14	53	436	3.339	2.021
10" x 8"	254	203	838	419	469,9	16 x 38.1	545	69,9	258	428	F25	75	58	18	67	735	8.596	4.205
12" x 10"	305	254	965	482,5	533,4	20 x 38.1	610	79,4	303	489	F25	113	68	20	78	1.200	12.271	7.348
14" x 12"	324	305	1.029	514,5	558,8	20 x 41.3	640	85,8	348	525	F25	111	68	20	78	1.795	19.382	10.120

Fig. 7050 (Class 1500)

DN	øP	øS	L	L1	øR	n x øS	øT	Y	h	N	ISO 5211	H	øA	J	K	WEIGHT	TORQUE	Kv
3" x 2"	77	51	473	236,5	203,2	8 x 31.8	265	47,7	129	107	F12	31	23	8	27	80	866	190
4" x 3"	102	77	549	274,5	241,3	8 x 34.9	310	54	156	137	F14	36	33	10	38	156	2.253	567
6" x 4"	146	102	711	355,5	317,5	12 x 38.1	395	82,6	193	168	F16	39,5	38	10	43	325	3.105	815
8" x 6"	194	146	841	420,5	393,7	12 x 44.5	485	92,1	242	395	F25	69,5	46	14	53	603	5.428	2.021
10" x 8"	241	194	1.000	500	482,6	12 x 50.8	585	108	292	445	F25	112,5	68	20	78	950	15.333	4.205

(*) Dimensions in mm and weight in kg.

(**) Weights and dimensions can be changed without notice.

(1) Bigger sizes available under customers request.